

TRACT FOR SALE – BY SEALED BID

Otarre Hills –Tract L (5.38 ac.)

Located at intersection of I-26 & I-77 near Cayce, SC in Lexington County

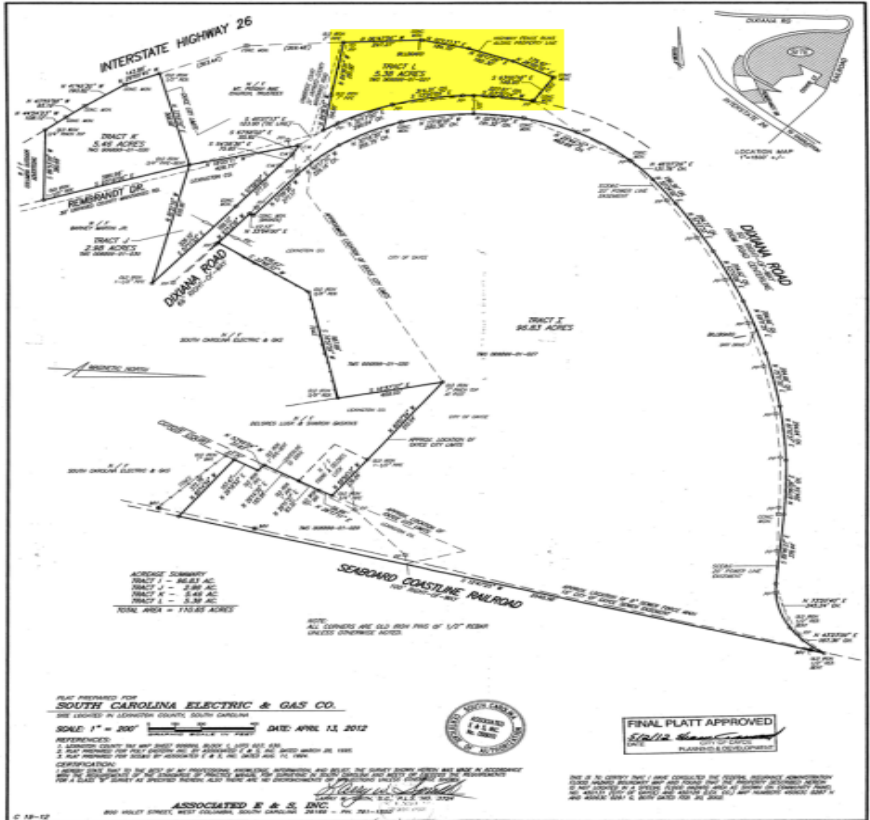
Otarre Hills Tract L

This parcel contains 5.38 acres of commercial property with 840 feet of interstate frontage.

It is located on Dixiana Road and the conversion of Interstates I-26 & I-77 near Cayce, SC in Lexington County.

FEATURES

Commercial Property
Tract L - 5.38 Ac.
840 ft. of Interstate
Frontage



Contact:

Ray Nix
SCANA Corporation
220 Operation Way
(D112)
Cayce, SC 29033
Office: 803-217-9171
rnix@scana.com



TRACT FOR SALE – BY SEALED BID

Otarre Hills – Tract L (5.38 ac.)

Located at intersection of I-26 & I-77 near Cayce, SC in Lexington County

Tract L

Contains 5.38 Ac.

840 Feet Interstate Frontage

Zoned: M-1

