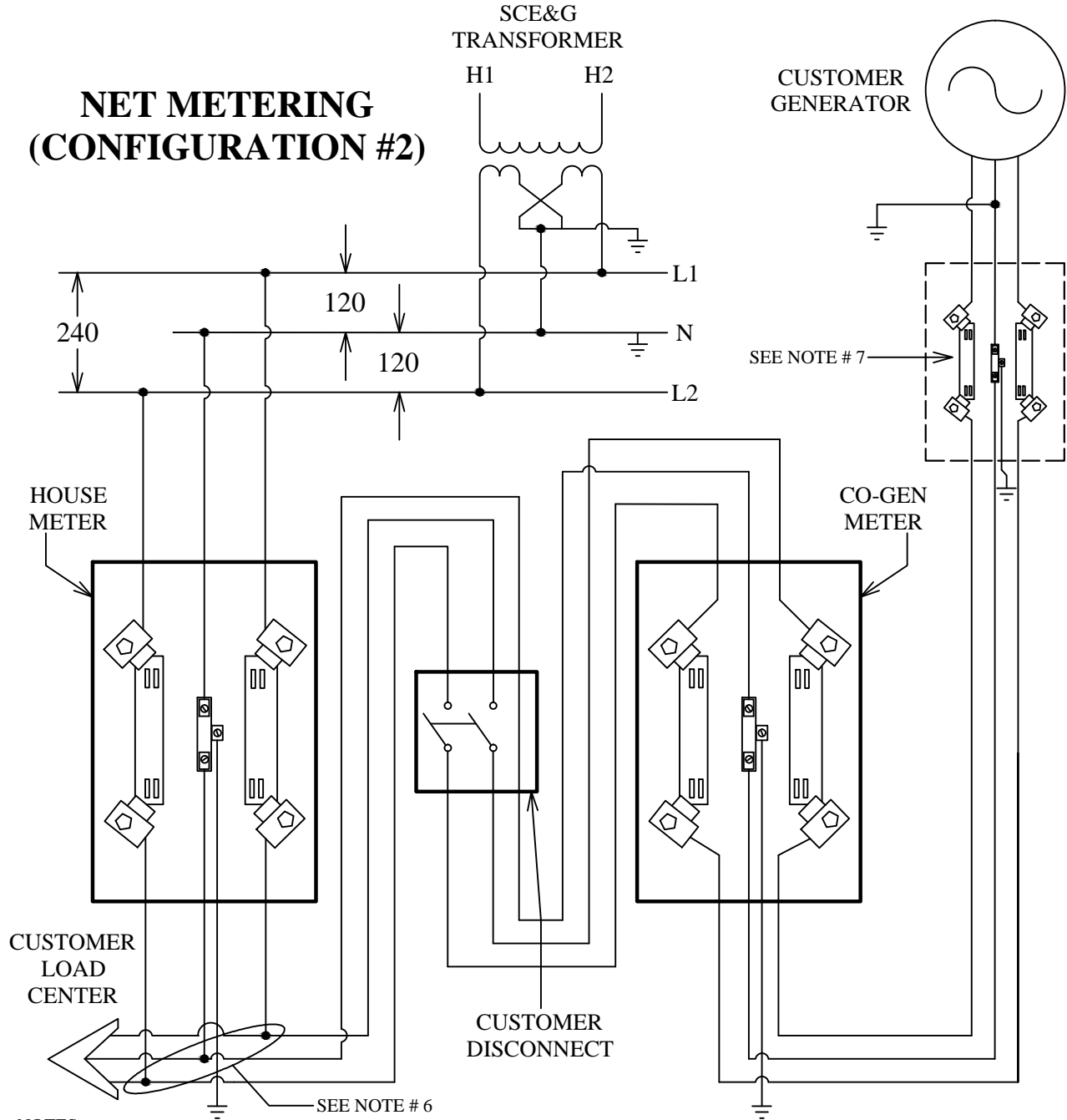


CUSTOMER GENERATION METER SOCKET WIRING DIAGRAM

BY JAL **MTR-GEN4**
 DATE 03-23-17
 REV. 4 SHEET 1 OF 2

REV. 4 03/23/17 UPDATED DISCONNECT WIRING

NET METERING (CONFIGURATION #2)



NOTES:

1. CUSTOMER GENERATOR CAN BE SOLAR, WIND OR OTHER QUALIFYING SYSTEM.
2. ALL EQUIPMENT MUST BE UL APPROVED, MEET IEEE STANDARDS AND SCE&G SAFETY REQUIREMENTS. INSTALLATION MUST MEET N.E.C., LOCAL CODE, AND SCE&G REQUIREMENTS.
3. ALL WIRING TROUGHS OR RACEWAYS CONTAINING UNMETERED WIRES SHALL BE OF THE SEALABLE TYPE.
4. CO-GEN METER SOCKET AND DISCONNECT SWITCH MUST BE MARKED WITH PERMANENT LABELS (SUPPLIED BY SCE&G). STOCK CODE 080.7960.0380 (WARNING LABEL); STOCK CODE 080.7960.0377 (NET METERING).
5. CONTACT SCE&G METERING DEPARTMENT FOR ADDITIONAL INFORMATION.
6. WHEN CONNECTIONS ARE MADE IN THE METER SOCKET, RECOMMEND USING SICAME BRAND LOW-VOLTAGE TTD-SERIES SHEAR-BOLT CONNECTORS (OR EQUIVALENT).
7. IF REQUIRED, A NON-UTILITY METER SOCKET MAY BE INSTALLED BETWEEN THE GENERATOR AND THE CO-GEN METER SOCKET. THE LOCATION OF THE NON-UTILITY METER SOCKET SHALL BE DETERMINED BY AN SCE&G REPRESENTATIVE (THE PREFERRED LOCATION IS NOT ADJACENT TO THE HOUSE & CO-GEN METERS).

**DISTRIBUTION CONSTRUCTION STANDARD
SOUTH CAROLINA ELECTRIC & GAS CO.**